



All-in-one engineering

Recognized as the ultimate all-in-one engineering tool, RC-Studio[®] from Reliable Controls provides a multivendor, multiprotocol integration solution for database, alarming, scheduling, trending, and sequence of operation programming. This easy-to-use, easy-to-learn BACnet Advanced Workstation (B-AWS) allows you to develop a complete and customized graphical user interface for monitoring and controlling any application at any scale. The real-time energy management and integrated fault detection and diagnostic capabilities in RC-Studio will empower you to improve your facility's operational efficiency and occupant comfort while maintaining your sustainability goals.



Better by design[™]



RELIABLECONTROLS.COM/RCST

PRODUCT FEATURES

Advanced Workstation

- Automatic BACnet discovery of all devices.
- Ability to retain discovered devices between sessions.
- Ability to create, delete, and drag BACnet objects.
- Intuitive database worksheets.
- Cut-and-paste program code.
- Full priority array control.
- Ability to use Workstation Groups for third-party BACnet devices.

Automated File Synchronization

- Automated synchronization of System Group files between workstations.
- Ability to synchronize support files with RC-WebView® or a MACH-ProWeb™ controller.
- Ability to fully configure a MACH-ProWeb controller across any BACnet network.

Simulate Mode

- Ability to program an entire system offline without controller hardware.

Network Management

- Alarm monitoring and annunciation to screen, email, and printer.
- Wild card searching and report generation.
- Customized Point Report worksheets.
- Manual Points Report worksheet.
- Automated network backup.

Language Support

- Support for English, French, Spanish, Italian, Portuguese, German, Simplified Chinese, and Korean.

Certification

- [BTL listed \(B-AWS\)](#).

All-In-One Programmability

- Program inputs, outputs, values, loops, arrays, schedules, and calendars.
- Program runtime logs, Single-point Trend Logs, and Multipoint Trend Logs.
- Write sequence-of-operation code, including syntax highlighting and watch lists, with the built-in editor.
- Build graphics in the System Group editor using RC-GrafxSet images and animations; annotate objects, Landing Pads, and keywords; and link to other graphics or networked content.
- Easily send program and System Group changes to multiple controllers using Send Multiple and Templates features.
- Select and modify multiple System Group annotations with a single action.

Templates

- Deploy and update multiple Reliable Controls System controllers with a single Panel File Template.
- Changes are automatically propagated across the network to selected controllers.

Graphic Support

- Support for .bmp, .jpg, and .png background images.
- Support for HTML5 graphics from RC-GrafxSet for animating equipment, buttons, dashboards, charts, gauges, maps, IFDD FlexTiles, RC-Reporter components, and much more.
- Color picker allows you to choose a custom color for text, objects, or backgrounds.
- Support for links to URLs, keywords, and other System Group graphics.

TECHNICAL SPECIFICATIONS

Recommended Workstation Requirements

- Processor: Intel Core i5.
- Two CPU cores are recommended for each installed Reliable Controls application.
- Storage: 10 GB of free hard disk space.
- RAM: 4 GB.
- Graphics: 1920 x 1080 32-bit color display.
- EIA-232 port or USB adapter for direct connection.
- 100 Mbps Ethernet network interface card.
- Microsoft Windows 8.1–Microsoft Windows 10 (x64).
- Windows Server 2012 R2–Windows Server 2019 (x64).

ORDERING

RC-ST3-1

- License for a single workstation.
- Comes with RC-Key, a USB software key.

RC-ST3-1A

- Adds single workstation to existing license for a previously purchased RC-ST3-1.

RC-ST3-S

- Subscription for 12 months of online software updates.

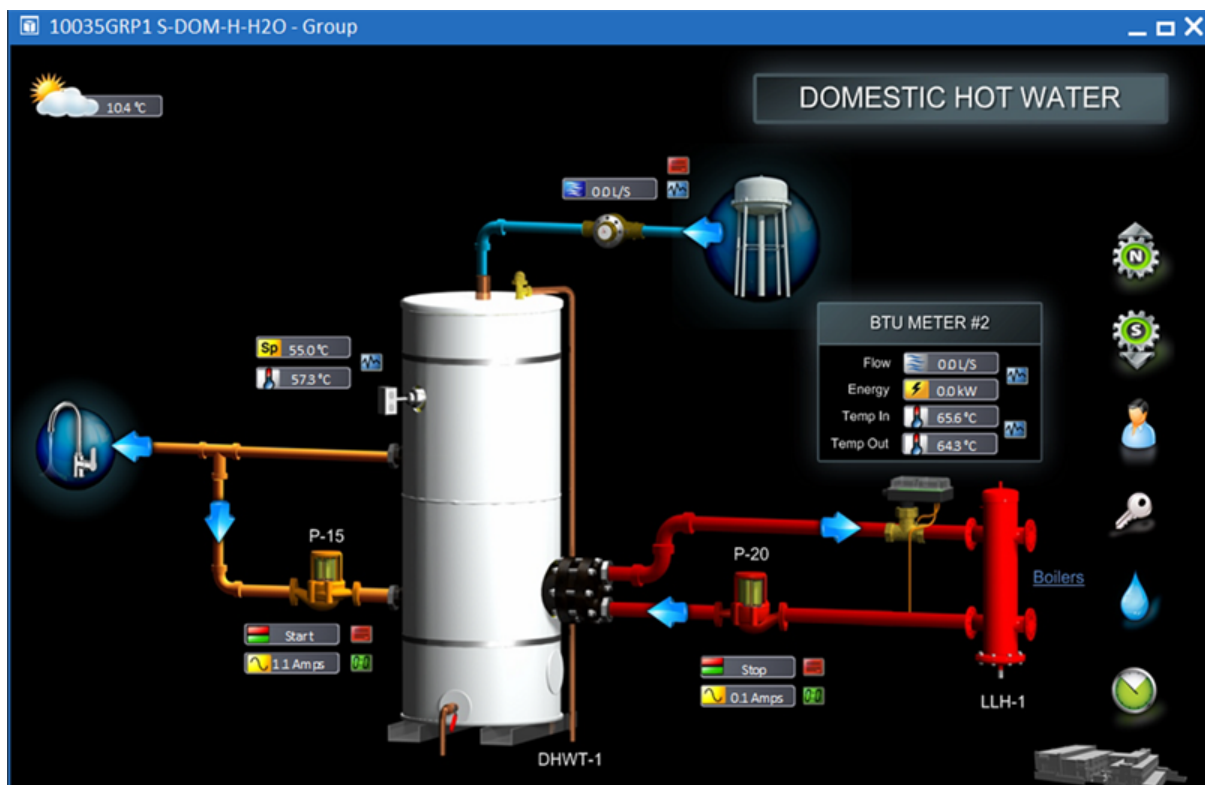
RC-ST3-S1

- License for a single workstation.
- Comes with software license. No RC-Key required.

RC-ST3-S1A

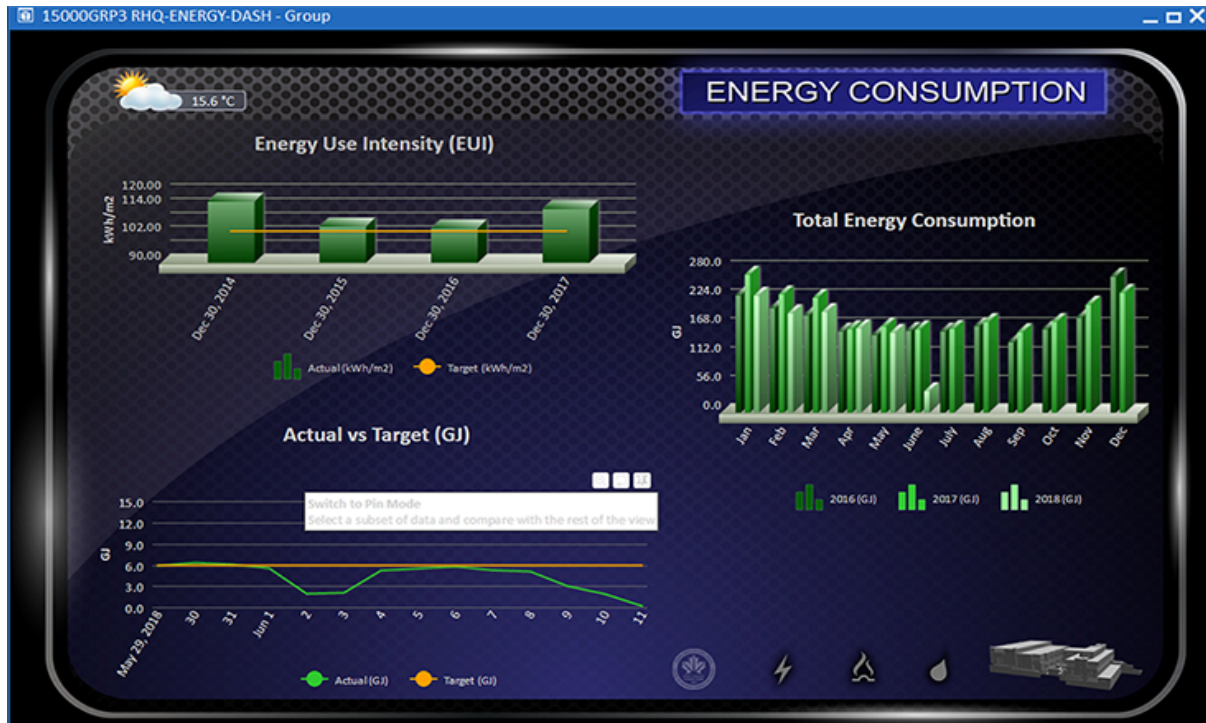
- Adds single workstation to existing license for previously purchased RC-ST3-S1.

SCREEN CAPTURES



System Group with equipment components

SCREEN CAPTURES

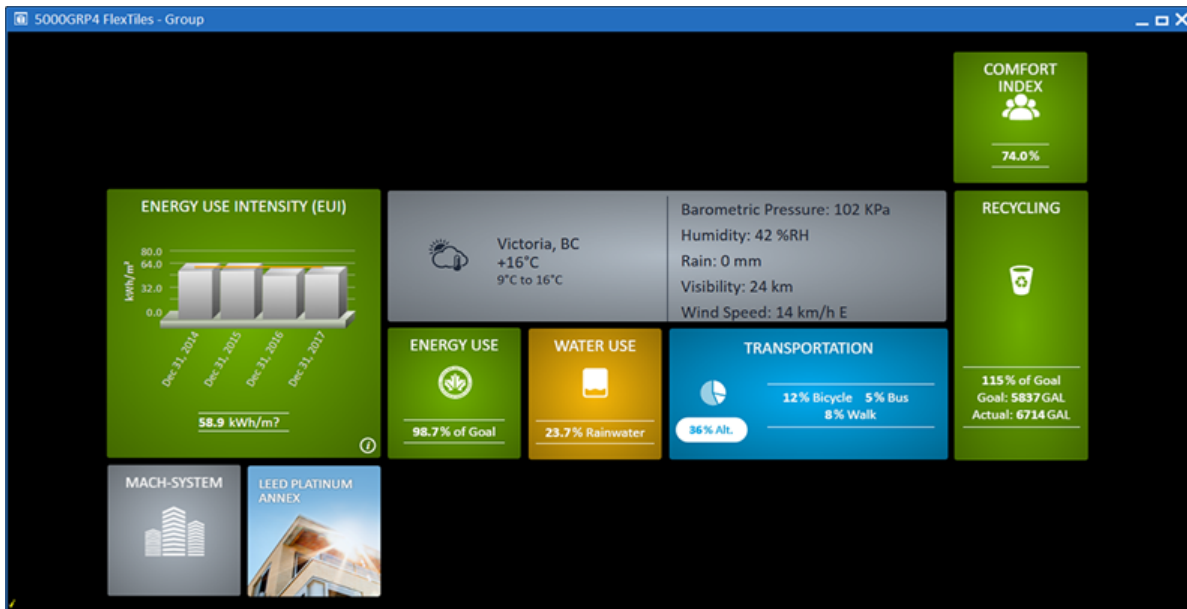


System Group with RC-Reporter components

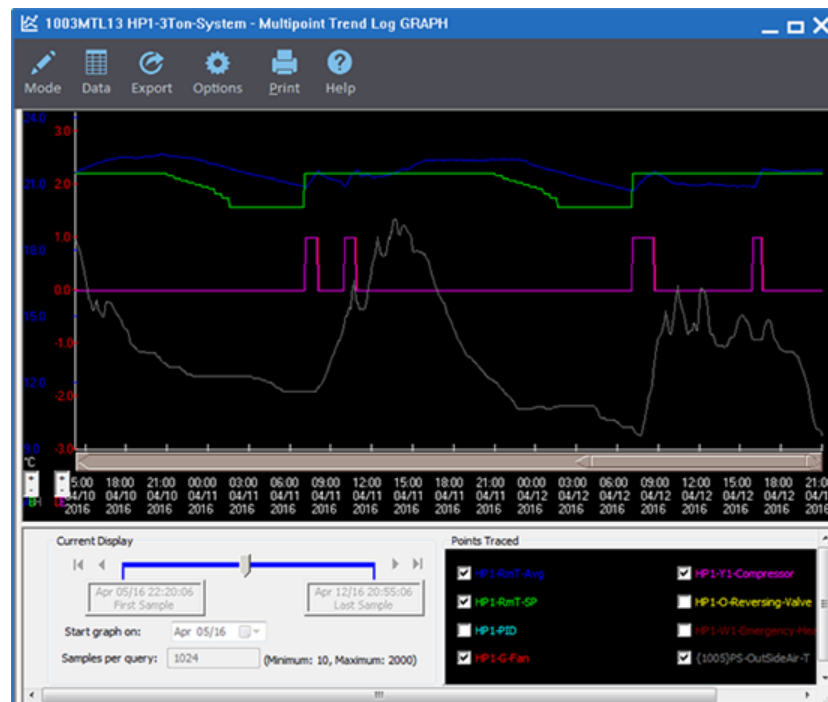


System Group with IFDD FlexTile

SCREEN CAPTURES

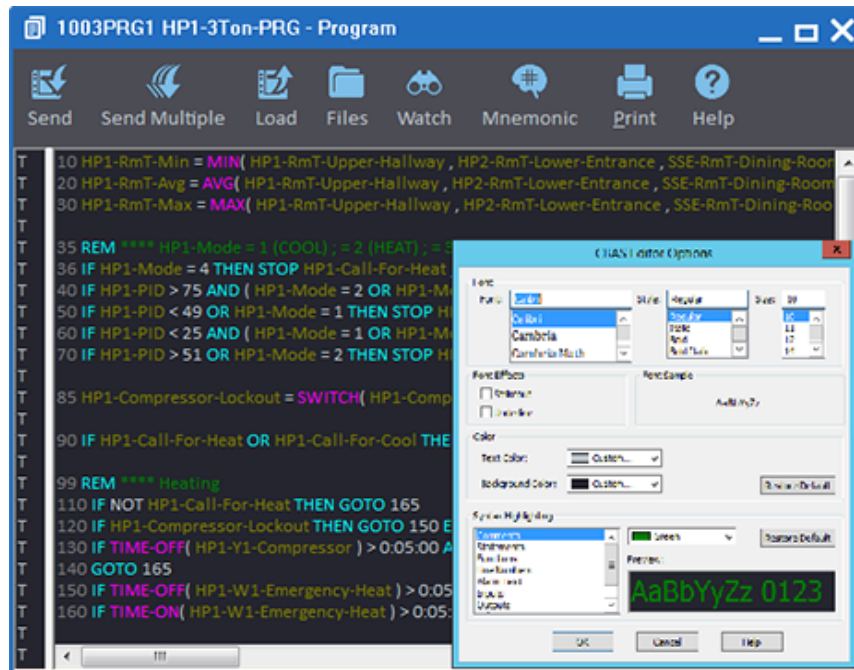


System Group with dashboard FlexTiles

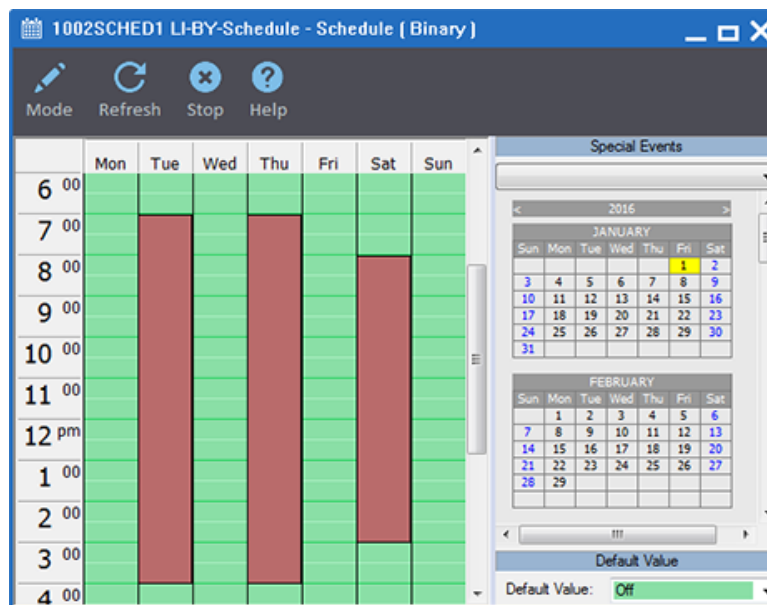


Multipoint Trend Log

SCREEN CAPTURES

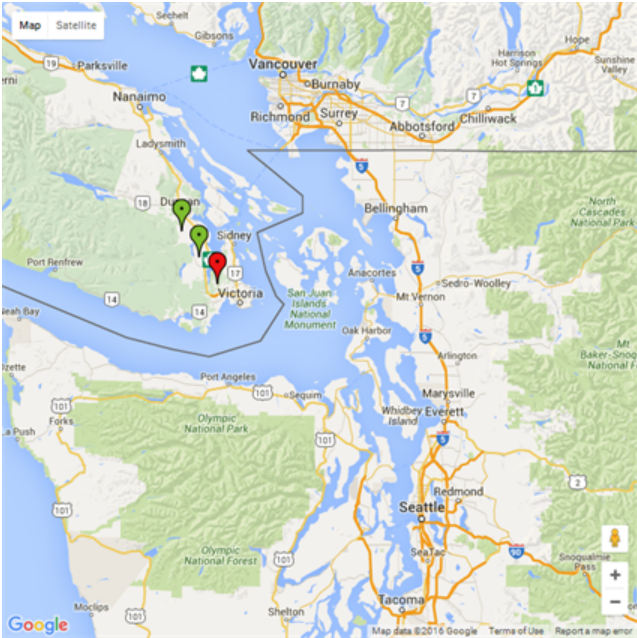


Program code



Schedule

SCREEN CAPTURES



System Group with Google Map

Dealer Information: